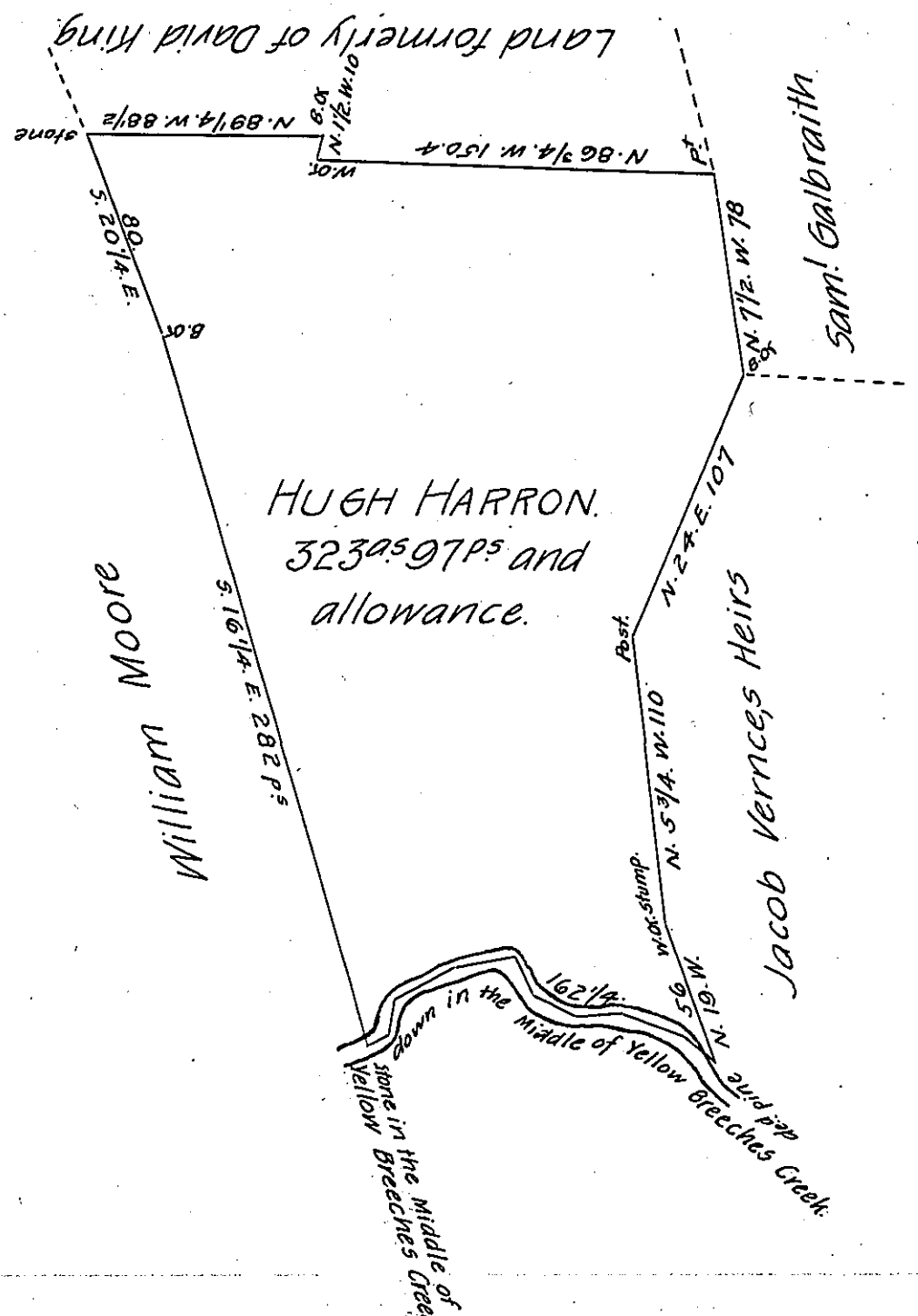


Courses & distances down Yellow Breeches Creek.

N. 60. E.	8 1/2
N. 8 1/2. E.	12 1/2
N. 65. E.	27 1/4
N. 80 1/4. E.	24.
S. 25. E.	16.
S. 57. E.	18.
S. 87 1/2. E.	19.
S. 70. E.	27.
S. 33 1/2. E.	10.
<hr/>	
	162 1/4



A Draught of a Tract of Land Situate in Dickinson Township, Cumberland County. Containing 323⁹⁵97P⁵ & allowance of six $\frac{1}{2}$ Cent for Roads &c. Surveyed the 29th Day of January A. D. 1811. In pursuance of an Application granted to Hugh Harron, Dated the 3^d Day of December 1766., N^o 2054.

W^m Wheeler, D. S.

To Andrew Porter, Esq^r:

S. G.

IN TESTIMONY that the above is a copy of the original remaining on file in the Department of Internal Affairs of Pennsylvania, made conformably to an Act of Assembly approved the 16th day of February, 1833, I have hereunto set my Hand and caused the Seal of said Department to be affixed at Harrisburg, this twelfth day of September 1906.

Isaac B. Brown
Secretary of Internal Affairs.